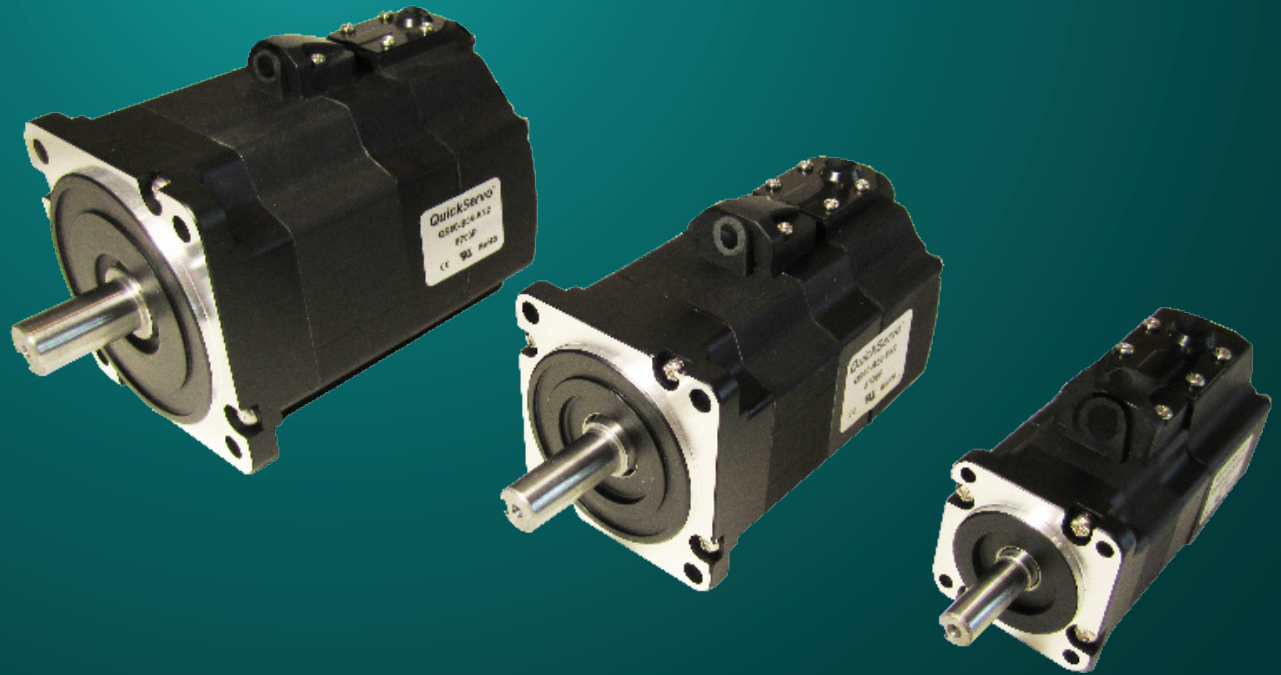




www.quickmotionusa.com

Brushless AC Servo Motors



Performance in Motion

Welcome to QuickMotion

All motors are the same, right? Let us show you why that's not always true. Consider our high performance, yet economical QuickServo QS Series of 3 phase AC servo motors. These encoder based motors are designed and made to the highest possible standards for performance and quality. Available in 6 frame sizes from 40mm to 130mm, and a power range from 30W through 5kW, there is a motor available for most applications in the semiconductor, medical, machine builder, packaging, inspection and test equipment markets.



Table of contents

QuickServo Technology

| | |
|-----------------------------|---|
| QuickServo motor technology | 1 |
|-----------------------------|---|

QuickServo Part Numbering

| | |
|------------------------------|---|
| QS Series motor part numbers | 2 |
|------------------------------|---|

| | |
|------------------------------|---|
| QS Series cable part numbers | 3 |
|------------------------------|---|

QS Series Specifications

| | |
|--------------------------|---|
| QS40 - 40mm frame motors | 4 |
|--------------------------|---|

| | |
|--------------------------|---|
| QS60 - 60mm frame motors | 6 |
|--------------------------|---|

| | |
|--------------------------|---|
| QS80 - 80mm frame motors | 8 |
|--------------------------|---|

| | |
|----------------------------|----|
| QS100 - 100mm frame motors | 10 |
|----------------------------|----|

| | |
|--------------------------------|----|
| QS120 - 120/130mm frame motors | 12 |
|--------------------------------|----|

QS Series Options

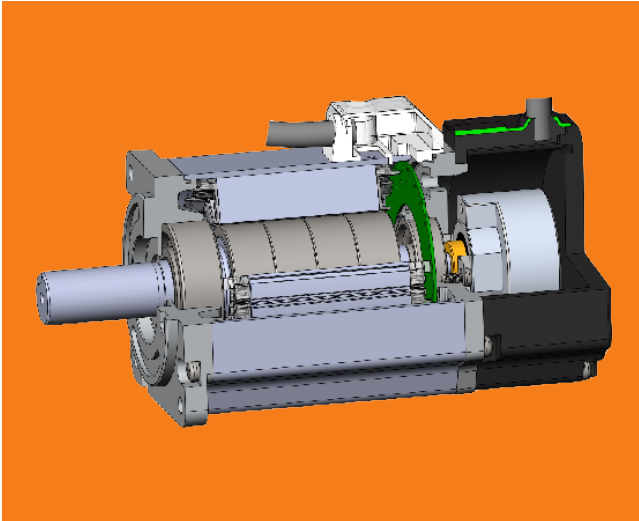
| | |
|----------------------------|----|
| QuickServo encoder options | 14 |
|----------------------------|----|

QuickServo AC Servo motors

The QuickServo series of AC servo motors are high density, low inertia and compact designs offering exceptional performance, especially during critical acceleration and deceleration periods that today's demanding applications require.

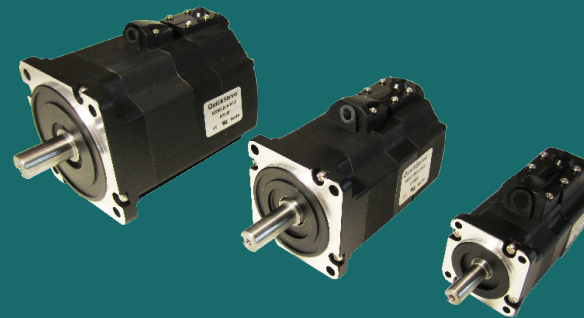
Features

- Exceptional dynamic performance with high torque-to-inertia ratios.
- Torque ranges from .87 in lb to 141 in lb and operating speeds up to 5,000 RPM.
- Windings to match 24VDC to 220VAC drives.
- Multiple feedback options including up to 10,000 line incremental encoders, absolute encoders, sine encoder and resolver.
- Commutation tracks embedded in feedback device. Optional brakes, shaft seals and keyed output shafts.
- Sealed and strain-relieved cable egress.
- Optional custom cables and connectors for customer specified drives.
- IP65 rating - optional IP67.



Technology

QuickServo AC brushless motors have been used in a wide variety of applications including medical, lab instrumentation, semiconductor equipment, test equipment, inspection equipment, packaging, etc. Today's demanding applications need the high speed, accuracy, and quiet performance which are the hallmark of QuickServo performance.



Ranges

| | | |
|-----------------|-------|--------------|
| Frame sizes | mm | 40 to 130 |
| Torque range | in lb | 1 to >400 |
| Speed range | rpm | 3000 to 5000 |
| Power range | watt | 30 to 5kW |
| Operating range | ° C | 0 to 40 |
| Winding voltage | vdc | 24 to 320 |
| Current range | amp | 1 to 29 |

QuickServo motor numbering

| QS | 40 | - | A | 08 | - | E | B | 1 |
|-----------------|------------|---|--|-------------|---|--|--------------------|------------------|
| Motor Series | Frame Size | | Winding | Rated Power | | Feedback | Options | Shaft Type |
| QS - QuickServo | 40 - 40mm | | A - up to 160 VDC* | A3 - 30W | | E - 2500 LPR incremental encoder* | N - No options | 2 - Keyed shaft* |
| | 60 - 60mm | | B - up to 320 VDC* | A5 - 50W | | A - 17 bit / 16 bit (multiturn) ABS* ** | B - 24 VDC brake | 1 - Smooth shaft |
| | 80 - 80mm | | D - up to 48 VDC* | A8 - 80W | | B - 20 / 16 bit absolute multiturn** *** | R - CPC connectors | |
| | 10 - 100mm | | J - up to 75 VDC | 01 - 100W | | R - Resolver | S - Shaft seal | |
| | 12 - 120mm | | Q - Custom winding | 01 - 100W | | S - 1024 period sine encoder (1Vpp)** | CXX - Custom **** | |
| | 13 - 130mm | | (Consult factory for special windings) | 02 - 200W | | Y - BiSS-C** | | |
| | | | | 04 - 400W | | W - 18 Bit absolute Endat 2.2 ** | | |
| | | | | 02 - 200W | | | | |
| | | | | 04 - 400W | | | | |
| | | | | 06 - 600W | | | | |
| | | | | 08 - 750W | | | | |
| | | | | 10 - 950W | | | | |
| | | | | 15 - 1.5kW | | | | |
| | | | | 20 - 2.0kW | | | | |
| | | | | 25 - 2.5kW | | | | |
| | | | | 30 - 3.0kW | | | | |
| | | | | 35 - 3.5kW | | | | |
| | | | | 40 - 4.0kW | | | | |
| | | | | 45 - 4.5kW | | | | |
| | | | | 50 - 5.0kW | | | | |

* Standard and stocked

** Not available for 40mm frame.

*** Consult factory

**** "XX" assigned by factory, shaft type included

QuickServo cable numbering

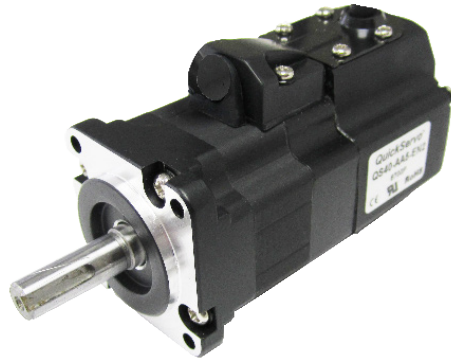
| QSPC | | 01 | | B | | 3M | | CC01 | |
|-----------------------|-----------------|---|-----------------|-----------------------------|------------|--|------------|-----------------------------|--|
| Motor Series | | Power / Feedback | | Brake / Connector | | Length | | QuickStart Cable Options*** | |
| QSPC - Power Cable | Power Cables | 01 - 18 AWG | Power Cables | Blank - no brake | All Cables | 1M - 1 meter | All Cables | Blank - Flying leads | |
| | | 02 - 16 AWG | | B - Brake * | | 3M - 3 meters | | CC01 - Copley XSJ | |
| | | 03 - 14 AWG (1.5 kW) | | R - CPC connectors * | | 6M - 6 meters | | CC02 - Copley XTL | |
| | | 04 - 12 AWG (2.0 thru 2.5 kW) | | BR - CPC conn w/brake * | | 9M - 9 meters | | CC03 - Copley XPL/XEL | |
| | | 05 - 12 AWG (3.0 thru 3.5 kW) | | M - Mil style connector ** | | XXXE - custom inches*** | | CC04 - Copley ACJ | |
| | | 06 - 10 AWG (4.0 thru 5.0 kW) | | BM - Mil style w/brake ** | | XXXM - custom meters*** (XX.X meters) | | CC05 - Copley ADP | |
| QSFC - Feedback Cable | Feedback Cables | E - 2500 LPR incremental | Feedback Cables | 01 - Standard to pigtail * | | | | CC06 - Copley BXL/BX2 | |
| | | A - 17 & 20 bit ABS encoders | | 01R - CPC connectors * | | | | CC07 - Copley ASP | |
| | | S - 1024 sine encoder, 1Vp-p | | 02 - Mil style connector ** | | | | | |
| | | (Other feedback options available - consult factory.) | | | | | | | |

* Use designation on motors up to and including 950W

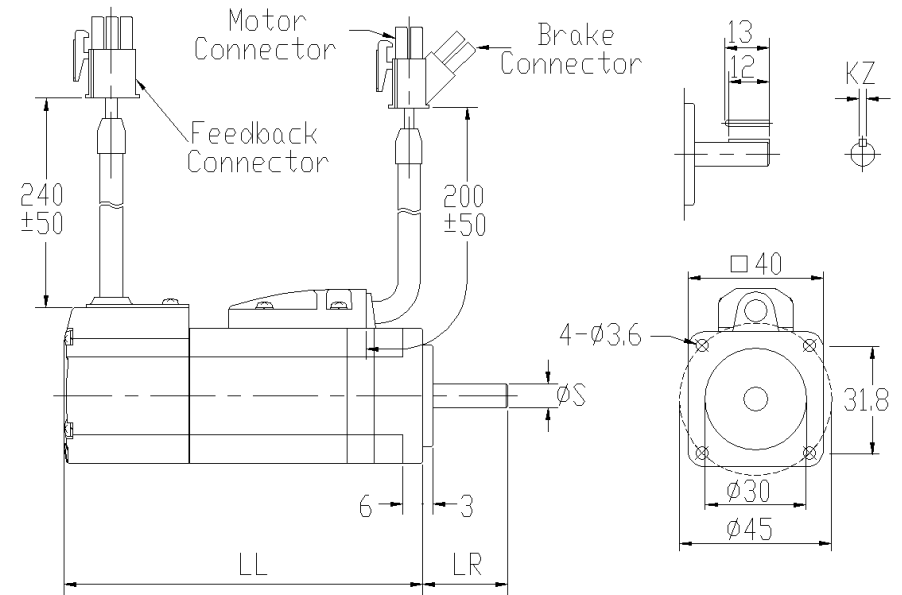
** Use designation on motors 1,500W and above

*** Minimum quantity orders may apply consult factory

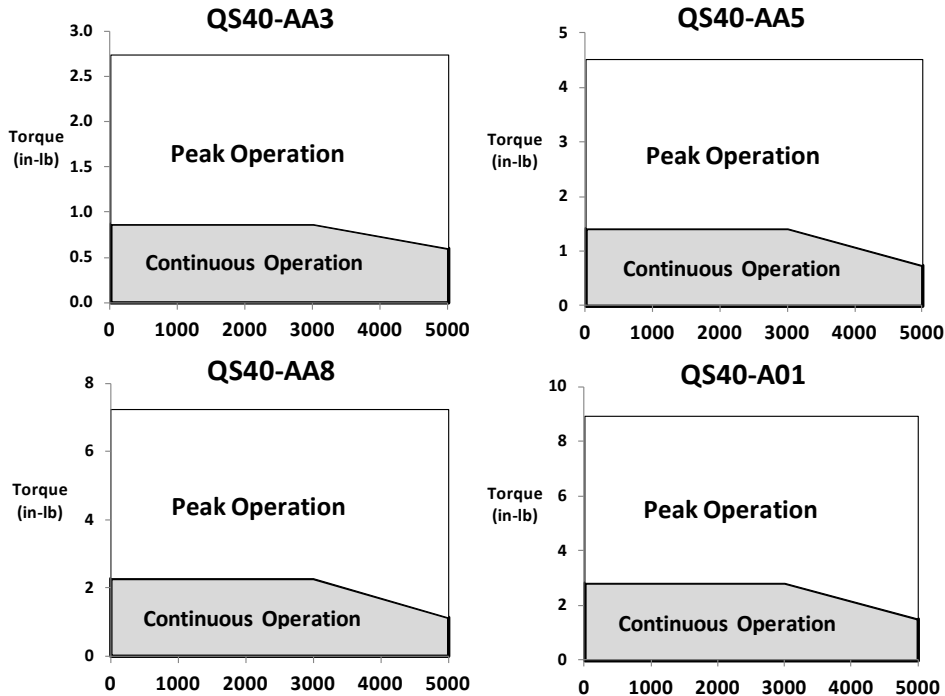
| 40mm Frame Specifications | 30 Watt | 50 Watt | 80 Watt | 100 Watt | 100 Watt |
|---|--|-----------------|-----------------|-----------------|--------------|
| Part number | QS40-AA3-XXX | QS40-AA5-XXX | QS40-AA8-XXX | QS40-A01-XXX | QS40-B01-XXX |
| Servo Drive Bus Voltage - VDC | 160 max | 160 max | 160 max | 160 max | 320 max |
| Rated Torque - in lb (Nm) | .93 (0.11) | 1.50 (0.17) | 2.39 (0.27) | 3.01 (0.34) | 2.8 (0.32) |
| Peak Torque - in lb (Nm) | 2.7 (0.31) | 4.6 (0.52) | 7.21 (0.82) | 9.03 (1.02) | 8.4 (0.95) |
| Rated Speed - RPM | 3,000 | 3,000 | 3,000 | 3,000 | 3,000 |
| Max Operating Speed - RPM | 5,000 | 5,000 | 5,000 | 5,000 | 5,000 |
| Rated Current - A_{rms} (Ap-p) | 1.10 (1.56) | 1.09 (1.54) | 1.81 (2.56) | 1.79 (2.53) | 0.9 (1.3) |
| Peak Current - A_{rms} (Ap-p) | 3.30 (4.67) | 3.27 (4.62) | 5.43 (7.68) | 5.37 (7.59) | 2.6 (3.7) |
| Power Cable Code (see page 5) | 01 | 01 | 01 | 01 | 01 |
| Rotor Inertia - standard lb in ² x 10 ⁻² (kg m ² x 10 ⁻⁴) | 0.51 (0.015) | 0.82 (0.024) | 1.33 (0.039) | 2.02 (0.059) | |
| Rotor Inertia - with brake lb in ² x 10 ⁻² (kg m ² x 10 ⁻⁴) | 0.65 (0.019) | 0.99 (0.029) | 1.67 (0.049) | 2.08 (0.061) | |
| Ambient Temperature | Operating: 32 to 104°F (0 to 40°C) (non-freezing) Storage: 5 to 158°F (-15 to 70°C) (non-freezing) | | | | |
| Ambient Humidity | Operating: 85% RH (non-condensing) Storage: 90% RH (non-condensing) | | | | |
| Atmosphere | Indoors (e.g. - no direct sunlight); no corrosive gas, inflammable gas, oil mist, or dust | | | | |
| IP Rating | IP65 standard - IP67 with optional shaft seal | | | | |
| Elevation | To 3,280 feet (1km) or less (performance reduction above this level) | | | | |
| Vibration | To 5g's, 160 ft/s ² (49m/s ²) or below | | | | |
| Weight - standard - lb (kg) | 0.7 (0.32) | 0.9 (0.39) | 1.1 (0.5) | 1.5 (0.66) | |
| Weight - with brake - lb (kg) | 1.2 (0.54) | 1.4 (0.63) | 1.7 (0.8) | 2.0 (0.93) | |



QS40 Motor Dimensions



QS40 Speed/Torque Curves



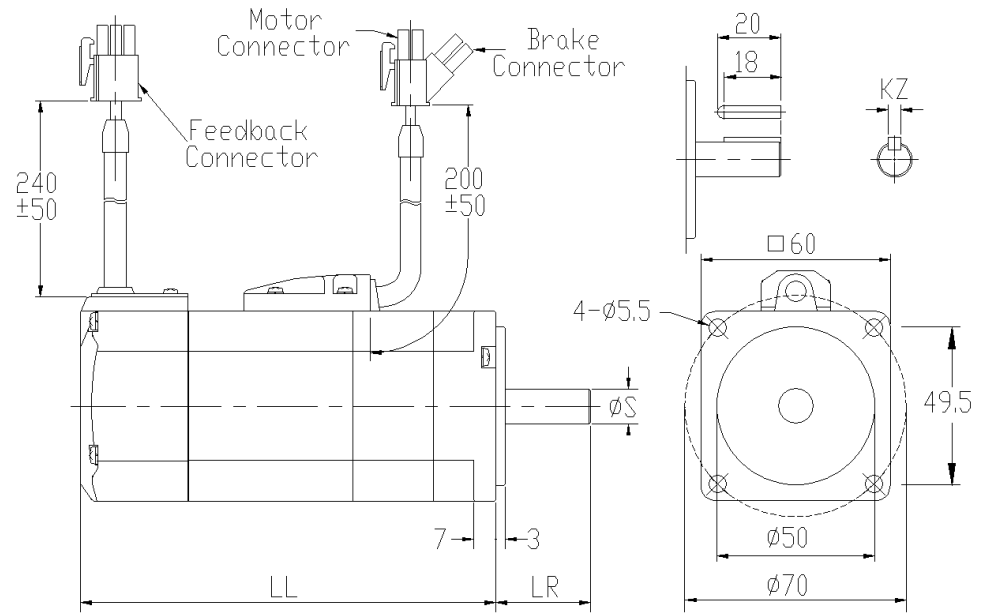
| Rated Power (W) | 30 | 50 | 80 | 100 |
|----------------------|-----|-----|-----|-----|
| LL - standard - mm | 74 | 82 | 102 | 112 |
| LL - with brake - mm | 106 | 114 | 134 | 144 |
| LR - mm | 25 | 25 | 25 | 25 |
| S - mm | 7 | 8 | 8 | 8 |
| KZ - mm | 2h9 | 3h9 | 3h9 | 3h9 |

60mm Frame

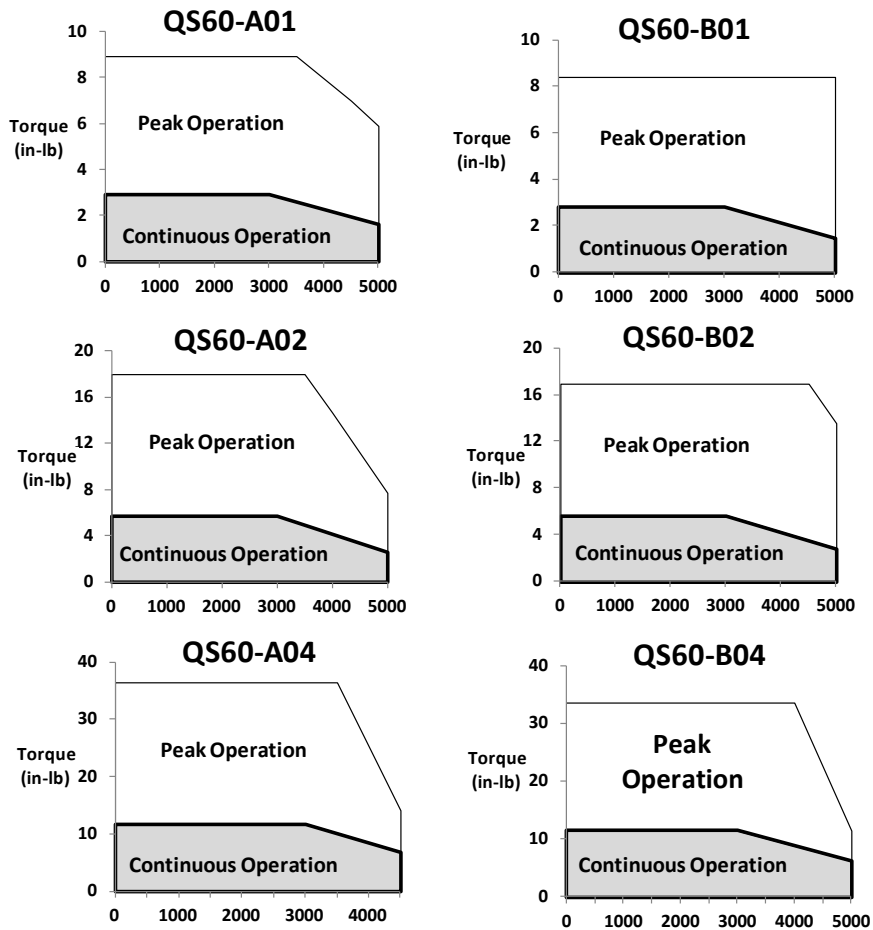
| 60mm Frame Specifications | 100 Watt | | 200 Watt | | 400 Watt | |
|---|--|--------------|----------------|--------------|----------------|--------------|
| | Part number | QS60-A01-XXX | QS60-B01-XXX | QS60-A02-XXX | QS60-B02-XXX | QS60-A04-XXX |
| Servo Drive Bus Voltage - VDC | 160 max | 320 max | 160 max | 320 max | 160 max | 320 max |
| Rated Torque - in lb (Nm) | 3.19 (0.36) | 2.92 (0.33) | 5.75 (0.65) | 5.84 (0.66) | 12.13 (1.37) | 11.86 (1.34) |
| Peak Torque - in lb (Nm) | 9.56 (1.08) | 8.85 (1.00) | 17.26 (1.95) | 18.84 (2.05) | 36.38 (4.11) | 35.40 (4.00) |
| Rated Speed - RPM | 3,000 | 3,000 | 3,000 | 3,000 | 3,000 | 3,000 |
| Max Operating Speed - RPM | 5,000 | 5,000 | 5,000 | 5,000 | 4,500 | 5,000 |
| Rated Current - A_{rms} (Ap-p) | 1.64 (2.32) | 1.0 1 (1.43) | 2.60 (3.68) | 1.60 (2.26) | 4.90 (6.93) | 2.47 (3.49) |
| Peak Current - A_{rms} (Ap-p) | 4.92 (6.96) | 3.04 (4.30) | 7.78 (11.00) | 4.87 (6.89) | 14.71 (20.80) | 7.42 (10.50) |
| Power Cable Code (see page 5) | 01 | 01 | 01 | 01 | 02 | 01 |
| Rotor Inertia - standard lb in ² x 10 ⁻² (kg m ² x 10 ⁻⁴) | 3.76 (0.11) | | 6.49 (0.19) | | 11.3 (0.33) | |
| Rotor Inertia - with brake lb in ² x 10 ⁻² (kg m ² x 10 ⁻⁴) | 4.78 (0.14) | | 7.18 (0.21) | | 12.0 (0.35) | |
| Ambient Temperature | Operating: 32 to 104°F (0 to 40°C) (non-freezing) Storage: 5 to 158°F (-15 to 70°C) (non-freezing) | | | | | |
| Ambient Humidity | Operating: 85% RH (non-condensing) Storage: 90% RH (non-condensing) | | | | | |
| Atmosphere | Indoors (e.g. - no direct sunlight); no corrosive gas, inflammable gas, oil mist, or dust | | | | | |
| IP Rating | IP65 standard - IP67 with optional shaft seal | | | | | |
| Elevation | To 3,280 feet (1km) or less (performance reduction above this level) | | | | | |
| Vibration | To 5g's, 160 ft/s ² (49m/s ²) or below | | | | | |
| Weight - standard - lb (kg) | 1.7 (0.8) | | 2.2 (1.0) | | 3.7 (1.7) | |
| Weight - with brake - lb (kg) | 2.6 (1.2) | | 3.3 (1.5) | | 5.1 (2.3) | |



QS60 Motor Dimensions



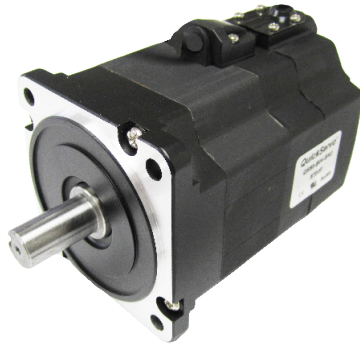
QS60 Speed/Torque Curves



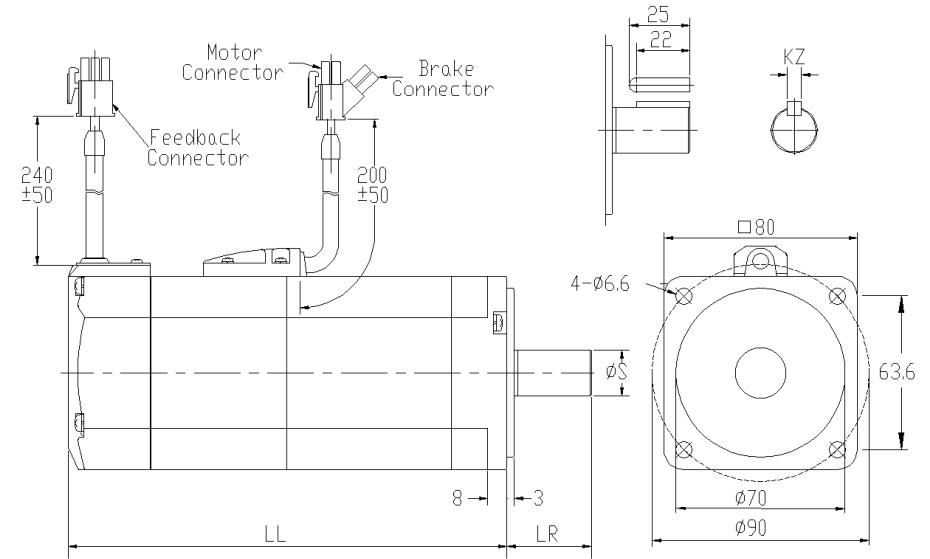
| Rated Power (W) | 100 | 200 | 400 |
|----------------------|-------|------|-------|
| LL - standard - mm | 86 | 98.5 | 128 |
| LL - with brake - mm | 118.5 | 131 | 160.5 |
| LR - mm | 25 | 30 | 30 |
| S - mm | 8 | 11 | 14 |
| KZ - mm | 3h9 | 4h9 | 5h9 |

80mm Frame

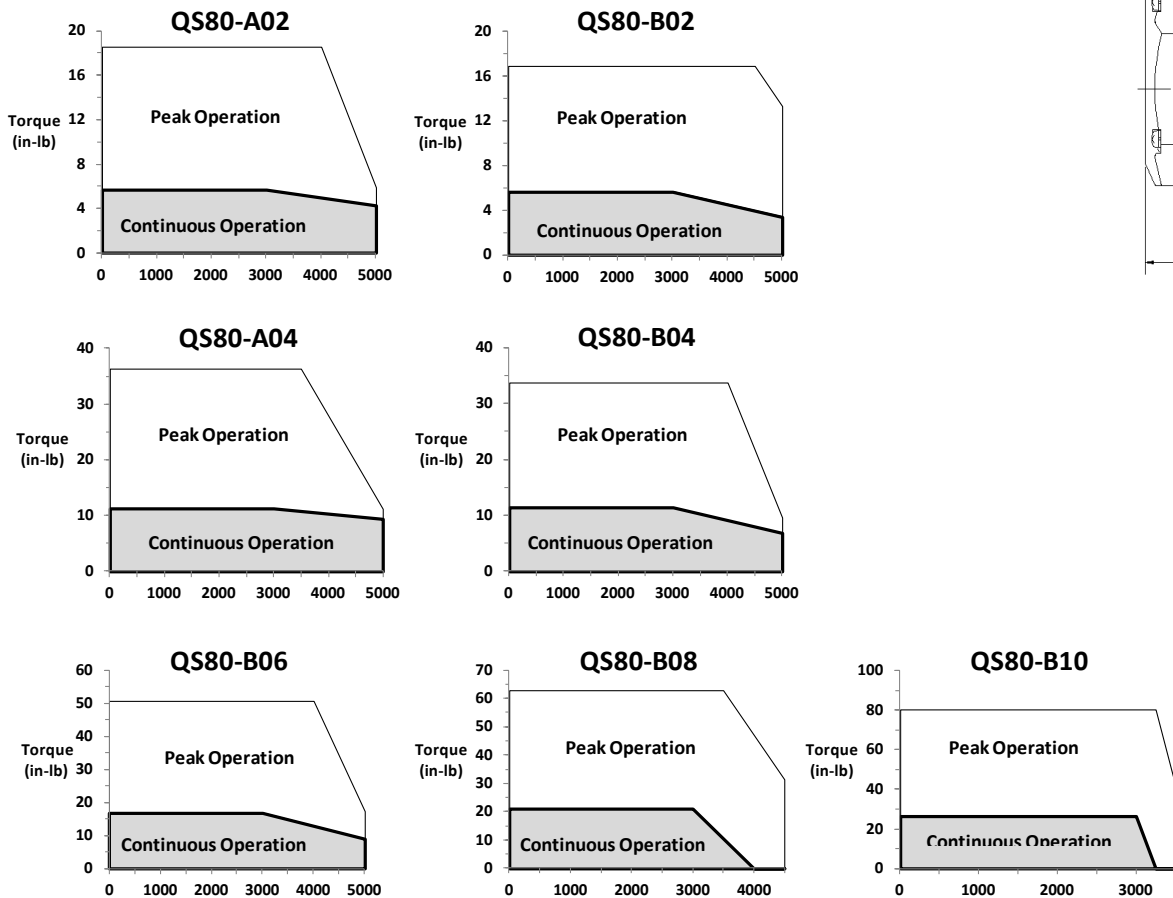
| 80mm Frame Specifications | 200 Watt | | 400 Watt | | 600 Watt | 750 Watt | 950 Watt |
|---|--|--------------|----------------|--------------|----------------|----------------|----------------|
| Part number | QS80-A02-XXX | QS80-B02-XXX | QS80-A04-XXX | QS80-B04-XXX | QS80-B06-XXX | QS80-B08-XXX | QS80-B10-XXX |
| Servo Drive Bus Voltage - VDC | 160 max | 320 max | 160 max | 320 max | 320 max | 320 max | 320 max |
| Rated Torque - in lb (Nm) | 5.62 (0.64) | 6.46 (0.73) | 12.30 (1.39) | 12.21 (1.38) | 19.91 (2.25) | 23.99 (2.71) | 30.54 (3.45) |
| Peak Torque - in lb (Nm) | 16.82 (1.90) | 19.47 (2.20) | 37.00 (4.18) | 36.82 (4.16) | 59.74 (6.75) | 72.13 (8.15) | 91.61 (10.35) |
| Rated Speed - RPM | 3,000 | 3,000 | 3,000 | 3,000 | 3,000 | 3,000 | 3,000 |
| Max Operating Speed - RPM | 5,000 | 5,000 | 4,500 | 5,000 | 5,000 | 4,500 | 3,500 |
| Rated Current - A_{rms} (Ap-p) | 2.63 (3.72) | 1.60 (2.26) | 4.63 (6.55) | 2.47 (3.49) | 4.10 (5.80) | 4.30 (6.08) | 4.31 (6.10) |
| Peak Current - A_{rms} (Ap-p) | 7.88 (11.15) | 4.88 (6.90) | 13.93 (19.70) | 7.42 (10.49) | 17.40 (12.30) | 12.94 (18.30) | 12.94 (18.30) |
| Power Cable Code (see page 5) | 01 | 01 | 01 | 01 | 01 | 01 | 01 |
| Rotor Inertia - standard lb in ² x 10 ⁻² (kg m ² x 10 ⁻⁴) | 12.3 (0.36) | | 21.2 (0.62) | | 31.8 (0.93) | 41.0 (1.2) | 50.2 (1.47) |
| Rotor Inertia - with brake lb in ² x 10 ⁻² (kg m ² x 10 ⁻⁴) | 16.7 (0.49) | | 25.3 (0.74) | | 35.9 (1.05) | 45.1 (1.32) | 50.9 (1.49) |
| Ambient Temperature | Operating: 32 to 104°F (0 to 40°C) (non-freezing) Storage: 5 to 158°F (-15 to 70°C) (non-freezing) | | | | | | |
| Ambient Humidity | Operating: 85% RH (non-condensing) Storage: 90% RH (non-condensing) | | | | | | |
| Atmosphere | Indoors (e.g. - no direct sunlight); no corrosive gas, inflammable gas, oil mist, or dust | | | | | | |
| IP Rating | IP65 standard - IP67 with optional shaft seal | | | | | | |
| Elevation | To 3,280 feet (1km) or less (performance reduction above this level) | | | | | | |
| Vibration | To 5g's, 160 ft/s ² (49m/s ²) or below | | | | | | |
| Weight - standard - lb (kg) | 3.3 (1.5) | | 4.6 (2.1) | | 6.4 (2.9) | 7.7 (3.5) | 9.0 (4.1) |
| Weight - with brake - lb (kg) | 5.1 (2.3) | | 6.6 (3.0) | | 7.7 (3.5) | 9.5 (4.3) | 10.8 (4.9) |



QS80 Motor Dimensions



QS80 Speed/Torque Curves



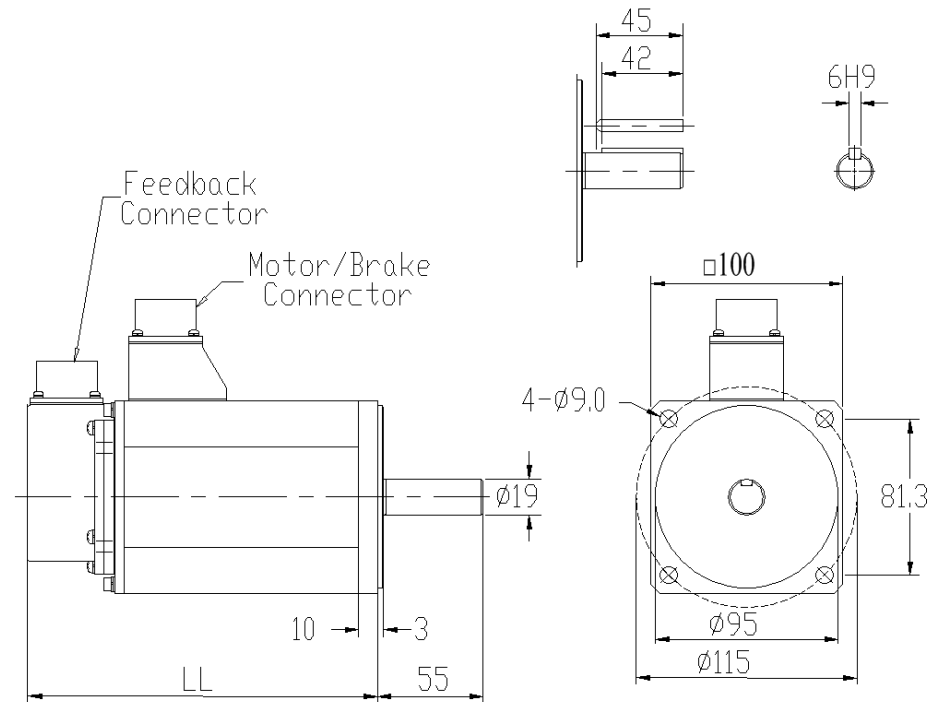
| Rated Power (W) | 200 | 400 | 600 | 750 | 950 |
|--------------------|------|------|------|------|------|
| LL - standard - mm | 97 | 112 | 129 | 147 | 165 |
| LL - w/ brake - mm | 132 | 147 | 164 | 182 | 200 |
| LR - mm | 30 | 30 | 35 | 35 | 35 |
| S - mm | 11 | 14 | 16 | 19 | 19 |
| KZ - mm | 4 h9 | 5 h9 | 6 h9 | 6 h9 | 6 h9 |

100mm Frame

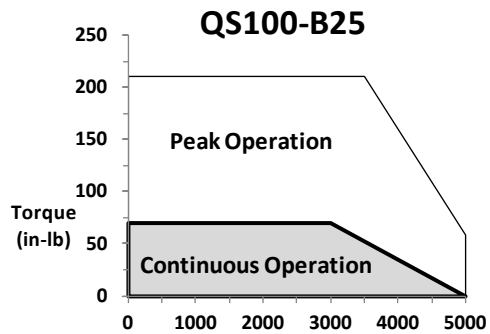
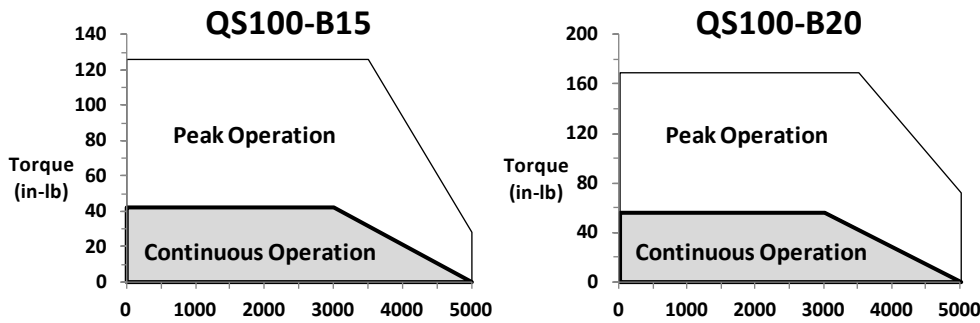
| 100mm Frame Specifications | 1500 Watt | 2000 Watt | 2500 Watt |
|---|--|---------------|---------------|
| Part number | QS100-B15-XXX | QS100-B20-XXX | QS100-B25-XXX |
| Servo Drive Bus Voltage - VDC | 320 max | 320 max | 320 max |
| Rated Torque - in lb (Nm) | 42.2 (4.8) | 56.9 (6.4) | 70.5 (8.0) |
| Peak Torque - in lb (Nm) | 128.3 (14.5) | 170.3 (19.2) | 210.7 (23.8) |
| Rated Speed - RPM | 3,000 | 3,000 | 3,000 |
| Max Operating Speed - RPM | 5,000 | 5,000 | 5,000 |
| Rated Current - A_{rms} (Ap-p) | 9.40 (13.3) | 13.00 (18.9) | 15.9 (22.5) |
| Peak Current - A_{rms} (Ap-p) | 28.30 (40.0) | 39.60 (56.0) | 48.1 (68.0) |
| Power Cable Code (see page 5) | 03 | 04 | 04 |
| Rotor Inertia - standard lb in ² x 10 ⁻² (kg m ² x 10 ⁻⁴) | 82 (2.4) | 104 (3.0) | 129 (3.8) |
| Rotor Inertia - with brake lb in ² x 10 ⁻² (kg m ² x 10 ⁻⁴) | 97 (2.8) | 119 (3.5) | 145 (4.2) |
| Ambient Temperature | Operating: 32 to 104°F (0 to 40°C) (non-freezing) Storage: 5 to 158°F (-15 to 70°C) (non-freezing) | | |
| Ambient Humidity | Operating: 85% RH (non-condensing) Storage: 90% RH (non-condensing) | | |
| Atmosphere | Indoors (e.g. - no direct sunlight); no corrosive gas, inflammable gas, oil mist, or dust | | |
| IP Rating | IP65 standard - IP67 with optional shaft seal | | |
| Elevation | To 3,280 feet (1km) or less (performance reduction above this level) | | |
| Vibration | To 5g's, 160 ft/s ² (49m/s ²) or below | | |
| Weight - standard - lb (kg) | 11.2 (5.1) | 14.3 (6.5) | 16.5 (7.5) |
| Weight - with brake - lb (kg) | 14.1 (6.4) | 17.2 (7.8) | 19.4 (8.8) |



QS100 Motor Dimensions



QS100 Speed/Torque Curves



| Rated Power (W) | 1500 | 2000 | 2500 |
|----------------------|-------|-------|-------|
| LL - standard - mm | 187.5 | 210.5 | 235.5 |
| LL - with brake - mm | 207.5 | 230.5 | 255.5 |

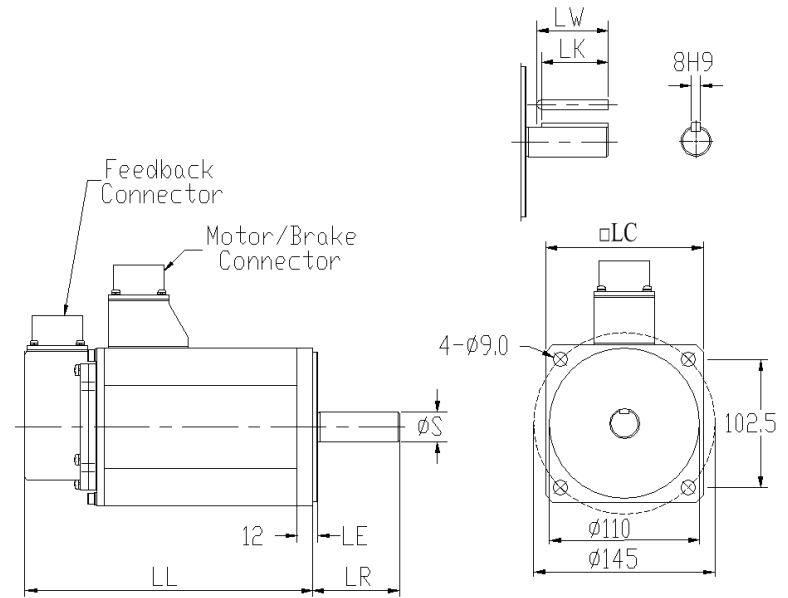
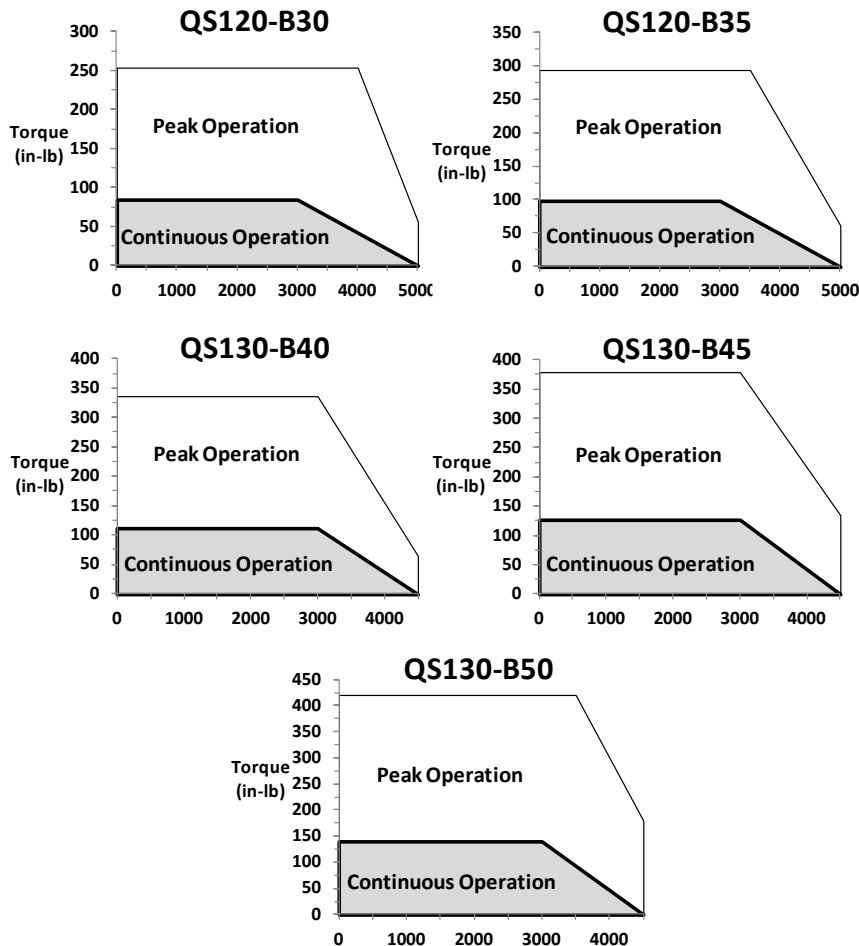
120/130mm Frame

| 120/130mm Frame Specifications | 3000 Watt | 3500 Watt | 4000 Watt | 4500 Watt | 5000 Watt |
|---|--|---------------|---------------|---------------|---------------|
| Part number | QS120-B30-XXX | QS120-B35-XXX | QS130-B40-XXX | QS130-B45-XXX | QS130-B50-XXX |
| Servo Drive Bus Voltage - VDC | 320 max | 320 max | 320 max | 320 max | 320 max |
| Rated Torque - in lb (Nm) | 84.4 (9.6) | 98.6 (11.1) | 112.4 (12.7) | 126.6 (14.3) | 140.7 (15.9) |
| Peak Torque - in lb (Nm) | 253.0 (28.6) | 294.7 (33.3) | 335.4 (37.9) | 379.7 (42.9) | 421.3 (47.6) |
| Rated Speed - RPM | 3,000 | 3,000 | 3,000 | 3,000 | 3,000 |
| Max Operating Speed - RPM | 5,000 | 5,000 | 4,500 | 4,500 | 4,500 |
| Rated Current - A_{rms} (Ap-p) | 20.0 (28.3) | 21.6 (30.6) | 24.7 (34.9) | 28.0 (39.6) | 28.5 (40.3) |
| Peak Current - A_{rms} (Ap-p) | 56.3 (79.6) | 61.0 (86.3) | 74.3 (105.0) | 83.4 (118.0) | 84.9 (120.0) |
| Power Cable Code (see page 5) | 05 | 05 | 06 | 06 | 06 |
| Rotor Inertia - standard lb in ² x 10 ⁻² (kg m ² x 10 ⁻⁴) | 205 (6.0) | 237 (6.9) | 424 (12.4) | 465 (13.6) | 547 (16.0) |
| Rotor Inertia - with brake lb in ² x 10 ⁻² (kg m ² x 10 ⁻⁴) | 220 (6.4) | 252 (7.4) | 468 (13.7) | 509 (14.9) | 605 (17.7) |
| Ambient Temperature | Operating: 32 to 104°F (0 to 40°C) (non-freezing) Storage: 5 to 158°F (-15 to 70°C) (non-freezing) | | | | |
| Ambient Humidity | Operating: 85% RH (non-condensing) Storage: 90% RH (non-condensing) | | | | |
| Atmosphere | Indoors (e.g. - no direct sunlight); no corrosive gas, inflammable gas, oil mist, or dust | | | | |
| IP Rating | IP65 standard - IP67 with optional shaft seal | | | | |
| Elevation | To 3,280 feet (1km) or less (performance reduction above this level) | | | | |
| Vibration | To 5g's, 160 ft/s ² (49m/s ²) or below | | | | |
| Weight - standard - lb (kg) | 20.5 (9.3) | 24.0 (10.9) | 28.4 (12.9) | 33.2 (15.1) | 38.1 (17.3) |
| Weight - with brake - lb (kg) | 23.3 (10.6) | 26.8 (12.2) | 32.6 (14.8) | 37.4 (17.0) | 42.2 (19.2) |



QS120 & QS130 Motor Dimensions

Speed/Torque Curves



| Rated Power (W) | 3000 | 3500 | 4000 | 4500 | 5000 |
|----------------------|-------|-------|------|------|------|
| LL - standard - mm | 214.5 | 234.5 | 248 | 268 | 288 |
| LL - with brake - mm | 239.5 | 259.5 | 273 | 293 | 313 |
| LR - mm | 55 | 55 | 65 | 65 | 65 |
| LE - mm | 3 | 3 | 6 | 6 | 6 |
| S - mm | 22 | 22 | 24 | 24 | 24 |
| LA - mm | 145 | 145 | 145 | 145 | 145 |
| LC - mm | 120 | 120 | 130 | 130 | 130 |
| LD - mm | 162 | 162 | 165 | 165 | 165 |
| LK - mm | 41 | 41 | 51 | 51 | 51 |

QuickServo Encoder Options

| Encoder Code | Specification | < 1000 Watts | > 1kW - 5kW |
|--------------|------------------------------------|---------------|-------------|
| E | 2500 LPR incremental | Standard | Standard |
| A | 17/16 bit multi-turn Nikon A - ABS | Optional * | N/A |
| B | High Res Nikon A - ABS multi-turn | Optional * ** | Optional ** |
| R | Resolver | Optional ** | Optional ** |
| S | Sine encoder, 1Vp-p, 1024 period | Optional * | N/A |
| Y | BiSS-C absolute multi-turn | Optional * ** | Optional ** |
| W | Endat 2.2 | Optional * ** | Optional ** |

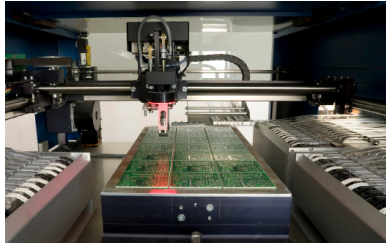
* Consult factory for 40mm frame.

** Additional lead-time required for initial orders.

*** Additional feedback technologies are available on a special order basis. Consult factory @ (844) 448-4256.

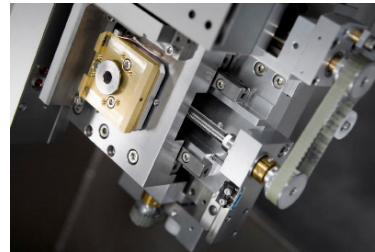
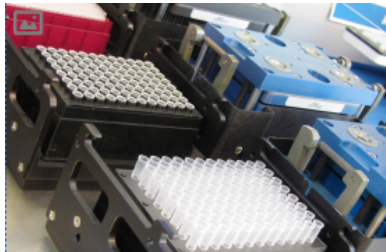
Facility

QuickMotion is located in North Carolina and California. Please contact us via phone, website, or email.



Support

Support for QuickMotion products is supplied both by the factory and by local high tech distributors throughout North America.



QR Code to
QuickMotion Website

Tel: (844) 4-QUICKMOTION

(844) 478-4256

info@quickmotionusa.com

www.quickmotionusa.com