

MOTOR PARAMETERS	ENGLISH UNITS	METRIC UNITS
CONTINUOUS TORQUE	1.41 in lb	0.16 N m
CONTINUOUS CURRENT	1.92 A <sub>RMS</sub> / 2.71 A <sub>PK-PK</sub>	
PEAK TORQUE	2.83 in lb	0.32 N m
PEAK CURRENT	3.83 A <sub>RMS</sub> / 5.43 A <sub>PK-PK</sub>	
RATED SPEED	3000 RPM / 315 rad/s	
MAX. OPERATING SPEED	3500 RPM / 366 rad/s	
RATED POWER	0.07 HP / 50 W	
BACK EMF CONSTANT (K <sub>e</sub> )	9.01 V/kRPM	
TORQUE CONSTANT (K <sub>t</sub> )	1.06 in lb / A <sub>PK</sub>	0.12 N m / A <sub>PK</sub>
PHASE INDUCTANCE @25 °C	1.94 mH	
PHASE RESISTANCE @25 °C	2.56 ohms	
INERTIA (WITHOUT BRAKE)	8.20x10 <sup>-3</sup> lb in <sup>2</sup>	2.40x10 <sup>-2</sup> kg cm <sup>2</sup>
INERTIA (WITH BRAKE)	9.91x10 <sup>-3</sup> lb in <sup>2</sup>	2.90x10 <sup>-2</sup> kg cm <sup>2</sup>
NUMBER OF POLES	8	

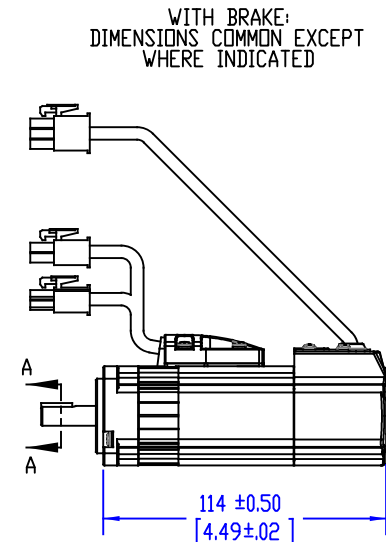
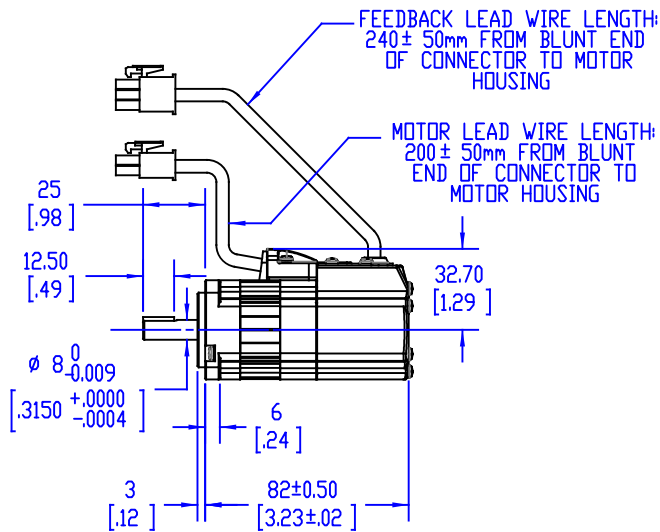
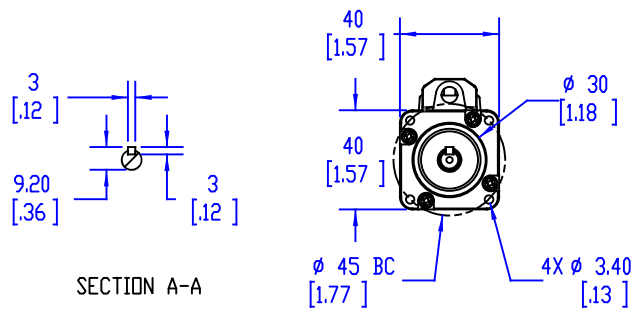
POWER CONNECTOR RECEPTACLE: 172167-1 PIN: 170360-1	
PIN	SIGNAL
1	U
2	V
3	W
4	G

MATING CONNECTOR  
CAP: 172159-1  
SOCKET: 170362-1  
DR: 170366-1

BRAKE CONNECTOR PLUG: 172165-1 PIN: 170360-1	
PIN	SIGNAL
1	BRAKE
2	BRAKE

MATING CONNECTOR  
CAP: 172157-1  
SOCKET: 170362-1  
DR: 170366-1

BRAKE INFORMATION		MOTOR FLANGE SIZE
ITEM	UNIT	40 mm
STATIC FRICTION TORQUE	N m	0.39
ROTOR INERTIA	10 <sup>-2</sup> kg cm <sup>2</sup>	0.25
ARMATURE SUCTION TIME	ms	25
ARMATURE RELEASE TIME	ms	20
RELEASE VOLTAGE	DC, V	2 (AT 20°C)
EXCITATION VOLTAGE	DC, V	24 ± 2.4
EXCITATION CURRENT	DC, A	0.26



23011 HOUTON PARKWAY, SUITE J3 LAGUNA HILLS, CA 92653	TITLE: QS40-DA5-xB2 QS40-DA5-xN2	
	SIZE: DWG. NO. B 040-0050-03	REV A
	SCALE: NONE	SHEET 1 OF 1